

Eaton SAFESHIELD™ EC910
High Pressure Waterblast Hose

SAFESHIELD puts (five times) the pressure on.

EATON

Powering Business Worldwide

Choose the natural,
eco-safe alternative
and get the highest
performance
waterblast
hose.

EATON SAFESHIELD™ WATERBLAST EC910-16

High pressure waterblasting is gaining popularity as a non-polluting safe method for industrial cleaning, stripping and removal of corrosion, paint, chemical and organic residues. Due to the extremely high pressures found in waterblast applications, safety is key and Eaton's new SAFESHIELD waterblast hose is designed for ultimate protection while providing the best performance in the industry.

Eaton's new SAFESHIELD EC910 hose assemblies offer pressures capable of meeting the most stringent of these applications. Eaton has supplied reliable high quality waterblast hose assemblies for decades. The SAFESHIELD EC910 is designed as the next generation of high pressure waterblast hose with a higher level of reliability and safety.

Eaton's new EC910 hose, internal skive fittings and/or hose assemblies are available in sizes, -08, -12, -16, and are approved for pressures from 1100 bar (16,000 psi) to 700 bar (10,000 psi) in order to withstand the higher pressure requirements for waterblast applications. EC910 has a special steel wire reinforcement construction and an excellent abrasion resistant cover resulting in increased strength while providing good flexibility for long service life and ease of handling in the field.





Applications:

- Stripe removal
- Water treatment facilities
- Marine surfaces
- Stucco removal
- Runway cleaning
- Swimming pool cleaning
- Paint removal
- Bridge renovation

Features:

- Sizes -08, -12 and -16
- Four heavy spiral wire construction
- Eaton's highly abrasion resistant DURA-TUFF hose cover
- 2.5:1 hose safety factor
- Sold in 50 foot hose lengths
- Exceeds ISO 7751 performance
- Meets global specifications EN1829-2 (impulse) and AS/NZ4233.2

Benefits:

- Eaton manufactured and assembled 50 foot hose assemblies provide customer security, knowing that the assemblies were made by professionally trained Eaton personnel
- Superior hose flexibility provides ease of use in the field
- Pre-cut 50 foot lengths of hose reduces scrap created during the assembly process



| # Part Number | DN | Hose I.D. mm (in) | Hose O.D. mm (in) | Max. Operating Pressure bar (psi) | Min. Burst Pressure bar (psi) | Min. Bend Radius mm (in) | Approx. Weight kg/m (lb/ft) |
|------------------|----|----------------------|----------------------|--------------------------------------|----------------------------------|-----------------------------|--------------------------------|
| EC910-08C50* | 12 | 12.7 [0.50] | 24.6 [0.97] | 1100 [16000] | 2750 [40000] | 228,6 [9.00] | 1,12 [0.75] |
| EC910-12C50* | 19 | 19.0 [0.75] | 32.8 [1.29] | 1000 [14500] | 2500 [36250] | 279,4 [11.00] | 1,75 [1.18] |
| EC910-16C50* | 25 | 25.4 [1.00] | 39.9 [1.59] | 690 [10000] | 1725 [25000] | 304,0 [12.00] | 2,25 [1.51] |

* 50 foot cut lengths. Orders must be placed in 50 foot increments.

Construction

Synthetic rubber inner tube, 4 heavy spiral wire reinforcement and highly abrasion resistant DURA-TUFF synthetic rubber cover

Approved Applications

Waterblast service with water, water-soap emulsion exceeds ISO 7751 requirements

Operating Temperature Range

Max Operating Temperature: -40°C to +93°C [-40°F to +200°F]

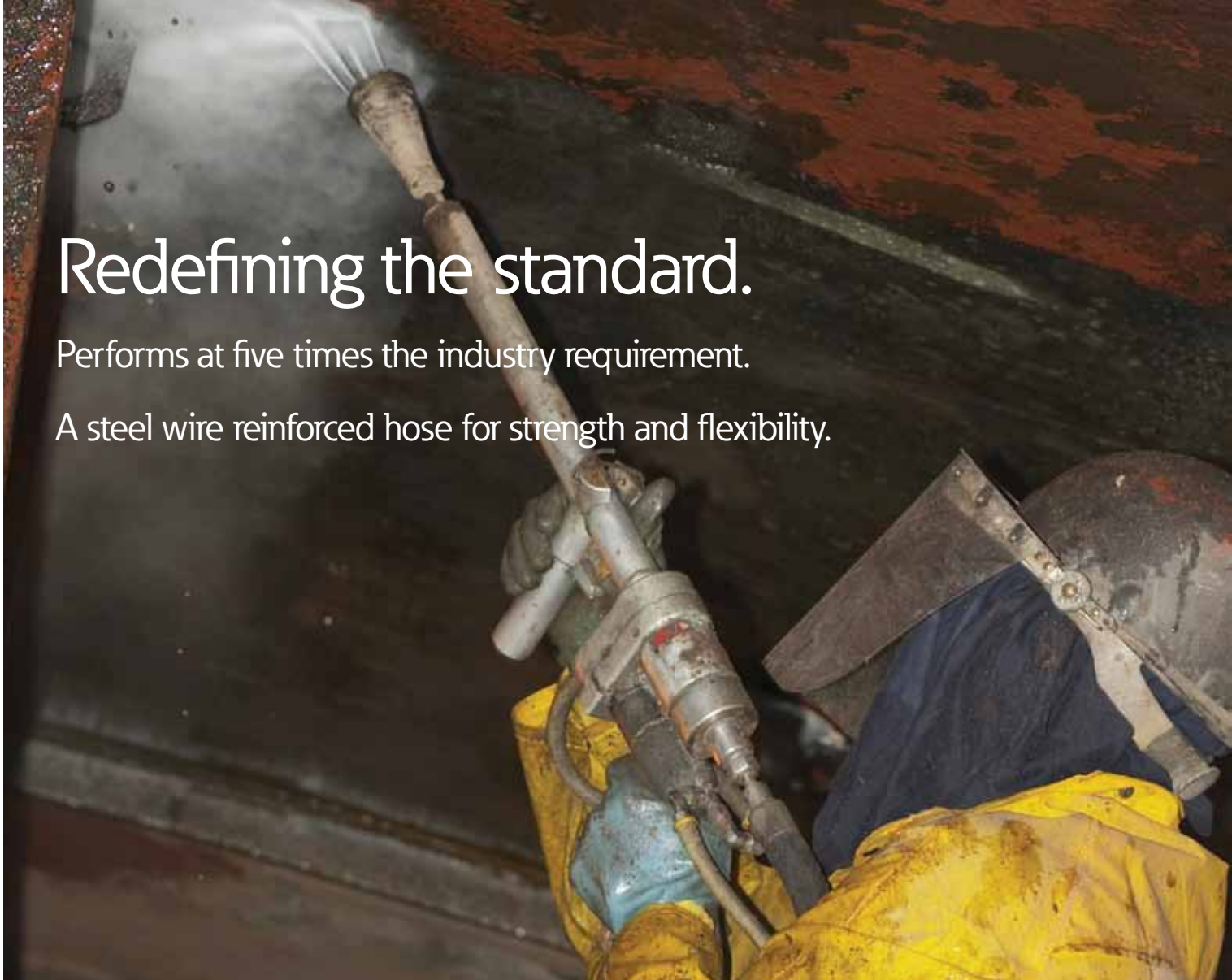
Continuous Service Temperature

-10°C to +80°C [-14°F to +176°F]

Redefining the standard.

Performs at five times the industry requirement.

A steel wire reinforced hose for strength and flexibility.

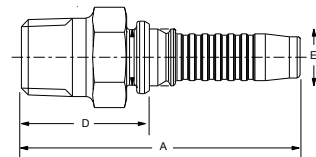


Only Eaton Approved Internal Skive Hose Fittings

Male NPTF

| Nipple Part # | Socket Part # | Thread | DN | Hose Size | A | | Hose Cut Off Factor (D) | | Eø | |
|---------------|---------------|----------|----|-----------|-------|--------|-------------------------|--------|------|-------|
| | | | | | mm | (in) | mm | (in) | mm | (in) |
| FW1889-0808S | FW1890-08S | 1/2-14 | 12 | -08 | 77,1 | (3.04) | 35,4 | (1.39) | 9,0 | (.36) |
| 1W12MP12 | 1WA12 | 3/4-14 | 19 | -12 | 92,1 | (3.63) | 40,1 | (1.58) | 15,1 | (.59) |
| 1W16MP16 | 1WA16 | 1-11 1/2 | 25 | -16 | 114,5 | (4.51) | 47,8 | (1.88) | 19,6 | (.77) |

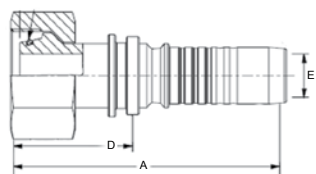
Crimp Specifications, Skive Dimensions and Associated Tooling Can Be Accessed and Downloaded at Eaton.com (Product Advisor)

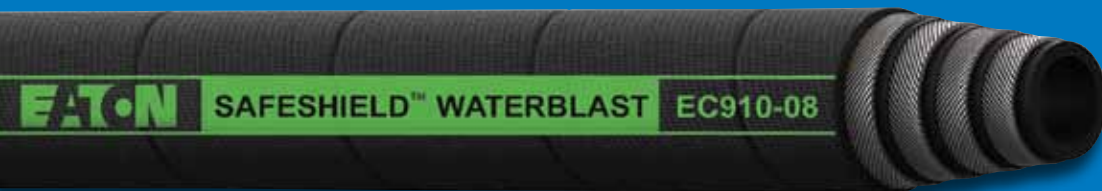


DKO

| Nipple Part # | Socket Part # | Thread | DN | Hose Size | A | | Hose Cut Off Factor (D) | | Eø | |
|---------------|---------------|---------|----|-----------|-------|--------|-------------------------|--------|------|--------|
| | | | | | mm | (in) | mm | (in) | mm | (in) |
| GH10235-8W | FW1890-08S | M24x1.5 | 12 | -08 | 74,0 | (2.91) | 32,4 | (1.28) | 9,0 | (0.36) |
| 1W20DS12 | 1WA12 | M36x2.0 | 19 | -12 | 103,2 | (4.06) | 51,2 | (2.02) | 15,1 | (0.59) |
| 1W25DS16 | 1WA16 | M42x2.0 | 25 | -16 | 120,6 | (4.75) | 54,0 | (2.13) | 19,6 | (0.77) |

Crimp Specifications, Skive Dimensions and Associated Tooling Can Be Accessed and Downloaded at Eaton.com (Product Advisor)





Eaton Waterblast Hose Assembly Program

Eaton manufactured hose assemblies are designed and assembled for the most demanding waterblast applications. "Made by Eaton" means your customers know they are using the highest quality products available in the market place assembled by professionally trained Eaton personnel. Whether it's paint stripping, vessel cleaning or boat hull debris remediation, safety and quality will never be compromised.

Eaton waterblast hose assemblies are available in 50 foot lengths with qualified NPTF hose fittings from our world class manufacturing facilities.

All Eaton manufactured assemblies are tagged and labeled for easy identification and traceability. All three available hose sizes are color coded and labeled according to WJTA (Water Jet Technology Association) pressure rating requirements.

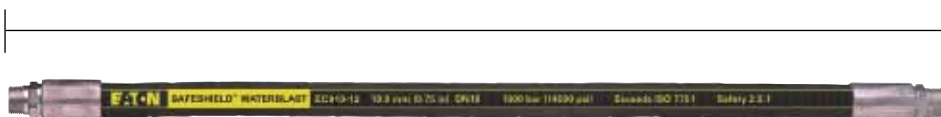
50 Foot Assemblies (NPTF Male Pipe Straight Hose Fittings)

| Hose Assembly Part No. | DN | Hose Size | Hose ID mm (in) | Overall Assembly Length | Hose Fitting Connection |
|------------------------|----|-----------|--------------------|-------------------------|-------------------------|
| FB5944-01 | 12 | -08 | 12,7 (0.50) | 50 Feet | Male NPTF |
| 1C001282-01 | 19 | -12 | 19,0 (0.75) | 50 Feet | Male NPTF |
| 1C001282-02 | 25 | -16 | 25,4 (1.000) | 50 Feet | Male NPTF |

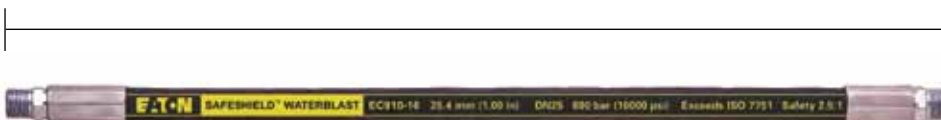
FB5944-01 (50 Feet -08 Size)



1C001282-01 (50 Feet -12 Size)



1C001282-02 (50 Feet -16 Size)





Eaton's Guardian™ Sleeve offers a higher level of safety in addition to providing longer hose life.

To protect your operators and nearby personnel while operating waterblast equipment, we recommend the use of Eaton's burst suppression Guardian sleeve. Eaton's Guardian sleeve will deflect a hose burst up to 1100 bar (16000 psi) providing peace of mind when using high pressure products.

The Guardian sleeve also has excellent abrasion resistance so it provides longer hose life – it adds an extra layer of protection for the hose assembly from excessive cover wear.

Eaton's Guardian Sleeve - Hose Burst Suppression Sleeve

| Properties | Specification | Description |
|------------------------|-----------------------|---|
| Burst Pressure | 1100 bar (16,000 psi) | Capable of containing hose burst up to 16,000 psi |
| Pin Hole Leak Pressure | 280 bar (4000 psi) | Sustained 4,000 psi pin hole deflection from focused 1mm pin hole |
| Abrasion Cycles | 250,000 | Survives up to 250,000 Abrasion cycles ISO 6945 |

| Sleeve Part# | DN | Hose Size Dash Size | Layline Color | Minimum PKG QTY (ft.) | Galvanized Steel Clamp Part # | Max. ID of Clamp (in) |
|--------------|----|---------------------|---------------|-----------------------|-------------------------------|-----------------------|
| FF90754-157 | 12 | EC910-08 | White | 300 | FF9217-0630S | 1.88 |
| FF90754-209 | 19 | EC910-12 | White | 300 | FF9217-0648S | 2.88 |
| FF90754-238 | 25 | EC910-16 | White | 300 | FF9217-0648S | 2.88 |

Optional color-coded laylines available (WJTA Guidelines) upon request. Minimum order quantities apply.

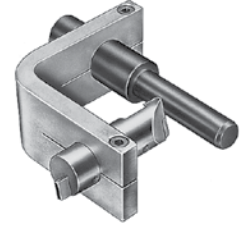


Eaton Qualified Skive Tooling and Accessories



Internal Skive Tooling Part Numbers

| Part Number | Hose Size | | Internal Skive Length | |
|----------------|-----------|-----------|-----------------------|--------|
| | DN | Dash Size | mm | (in) |
| FT1240-150-8* | 12 | -08 | 6,9 | (0.27) |
| 121502755-8 | | | | |
| FT1240-150-12* | 19 | -12 | 9,9 | (0.39) |
| 12150506-12 | | | | |
| FT1240-150-16* | 25 | -16 | 13,5 | (0.53) |
| 12150506-16 | | | | |



External Skive Tooling Part Numbers

| Part Number | Hose Size | | Internal Skive Length | |
|-------------|-----------|-----------|-----------------------|--------|
| | DN | Dash Size | mm | (in) |
| FT1231-8* | 12 | -08 | 36,1 | (1.42) |
| GT2282-8 | | | | |
| FT1231-12* | 19 | -12 | 36,3 | (1.43) |
| GT2282-12 | | | | |
| FT1231-16* | 25 | -16 | 47,0 | (1.85) |
| GT2282-16 | | | | |

*Tooling only available in North America. Use other P/N outside NA. Follow Eaton assembly procedures for internal and external skiving.

Eaton FD69 Waterblast Coupling 690 bar (10,000 psi)

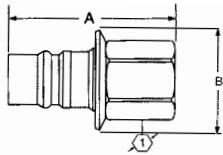


Figure 1

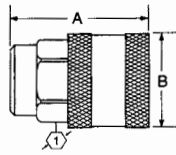


Figure 2

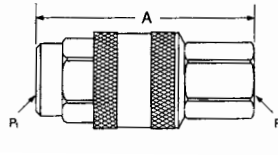


Figure 3



Dimensions (Female NPT)

| Part Number | Buna-N | Viton | EPR | Coupling Type | Body Size | Port Size | Port Thread | Type | Fig. | Dimensions | | | | | | |
|-----------------|-----------------|-----------------|-----------------|---------------|-----------|-----------|-------------|------------|------|------------|--------|------|--------|------|--------|------|
| | | | | | | | | | | Fig. | A | B | Hex | ⌀ | | |
| Steel | | | | | | | | | | | mm | (in) | mm | (in) | mm | (in) |
| FD69-1002-06-08 | FD69-1002-06-08 | FD69-1002-06-08 | FD69-1002-06-08 | Male* | 1/2 | 3/8 | 3/8-18 | Female NPT | 1 | 47.0 | (1.85) | 41.7 | (1.64) | 25.4 | (1.00) | |
| FD69-1001-06-08 | FD69-1026-06-08 | FD69-1028-06-08 | FD69-1028-06-08 | Female | 1/2 | 3/8 | 3/8-18 | Female NPT | 2 | 54.1 | (2.13) | 41.1 | (1.62) | 31.8 | (1.25) | |
| FD69-1002-08-08 | FD69-1002-08-08 | FD69-1002-08-08 | FD69-1002-08-08 | Male* | 1/2 | 1/2 | 1/2-14 | Female NPT | 1 | 59.4 | (2.34) | 41.7 | (1.64) | 28.4 | (1.12) | |
| FD69-1001-08-08 | FD69-1026-08-08 | FD69-1026-08-08 | FD69-1026-08-08 | Female | 1/2 | 1/2 | 1/2-14 | Female NPT | 2 | 54.1 | (2.13) | 41.1 | (1.62) | 31.8 | (1.25) | |
| Stainless Steel | | | | | | | | | | | mm | (in) | mm | (in) | mm | (in) |
| FD69-1012-08-08 | FD69-1012-08-08 | FD69-1012-08-08 | FD69-1012-08-08 | Male* | 1/2 | 1/2 | 1/2-14 | Female NPT | 1 | 59.4 | (2.34) | 41.7 | (1.64) | 28.4 | (1.12) | |
| FD69-1011-08-08 | | | | Female | 1/2 | 1/2 | 1/2-14 | Female NPT | 2 | 54.1 | (2.13) | 41.1 | (1.62) | 33.3 | (1.31) | |

*Male halves contain no seals.

Complete Coupling Assemblies

| Part Number | Buna-N | Viton | EPR | Coupling Type | Body Size | Port Size | Thread | | Type | Fig. | Dimensions | |
|------------------|------------------|------------------|------------------|---------------|-----------|-----------|--------|--------|------------|------|------------|--------|
| | | | | | | | (P) | (P1) | | | mm | (in) |
| Steel | | | | | | | | | | | | |
| FD69-1000-080808 | FD69-1027-080808 | FD69-1029-080808 | FD69-1029-080808 | Complete | 1/2 | 1/2 | 1/2-14 | 1/2-14 | Female NPT | 3 | 87.1 | (3.43) |
| FD69-1000-080806 | FD69-1027-080806 | FD69-1029-080806 | FD69-1029-080806 | Complete | 1/2 | 1/2 & 3/8 | 1/2-14 | 3/8-18 | Female NPT | 3 | 87.1 | (3.43) |
| FD69-1000-060808 | FD69-1027-060806 | FD69-1029-080808 | FD69-1029-080808 | Complete | 1/2 | 3/8 & 1/2 | 3/8-18 | 1/2-14 | Female NPT | 3 | 74.7 | (2.94) |
| FD69-1000-060806 | FD69-1027-060806 | FD69-1029-080806 | FD69-1029-080806 | Complete | 1/2 | 3/8 | 3/8-18 | 3/8-18 | Female NPT | 3 | 74.7 | (2.94) |
| Stainless Steel | | | | | | | | | | | | |
| FD69-1010-080808 | | | | Complete | 1/2 | 1/2 | 1/2-14 | 1/2-14 | Female NPT | 3 | 87.1 | (3.43) |

Eaton
Hydraulics Business USA
14615 Lone Oak Road
Eden Prairie, MN 55344
USA
Tel: 952-937-9800
Fax: 952-294-7722
www.eaton.com/hydraulics

PowerFlex-fhp B.V.
Flevolaan 62g
1382 JZ Weesp
the Netherlands
+31 (0)294-450 200
www.powerflex-fhp.nl
info@powerflex-fhp.nl

© 2011 Eaton Corporation
All Rights Reserved
Printed in USA
Document No. E-HOHP-MS003-E
October 2012



Powering Business Worldwide